

ANISH GIRI

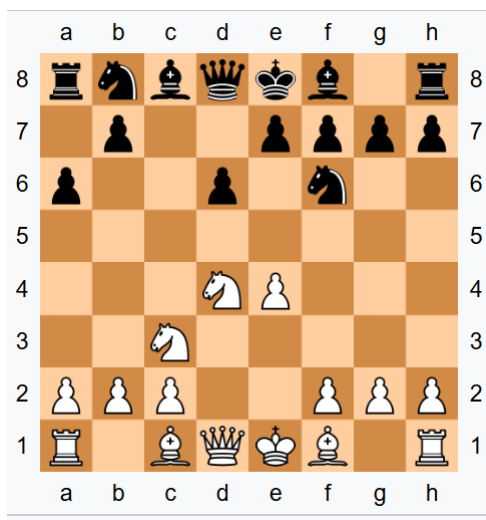
Born 1994. Represents The Netherlands. ELO 2753

Qualified by winning the FIDE Grand Swiss 2025.

Has played in the Candidates tournament three times previously. He is ranked number 9 in the world. He has great technical ability in the end game.

In this game v- Robert Hovhannisyanyan, Anish Giri was black and played the **Najdorf variation of the Sicilian Defence**:

1. e4, c5
2. Nf3, d6
3. d4 cxd4
4. Nxd4 Nf6
5. Nc3 a6



Black's 5...a6 aims to deny the b5-square to White's knights and light-square bishop while maintaining flexible development. Games in the Najdorf frequently feature opposite-side castling, where White castles long and both sides launch simultaneous attacks on their opponents' kings.

In the game below against Jan Duda, Anish Giri is white, and finishes with an 11 move **forced checkmate**. Can you complete that **king hunt**? It starts with Rook g7 check, and involved many **sacrifices**, as well as a nice **revealed check**. Find the checkmate move



1. Rg7+, Kxg7
2. f6+, Kh6
3. Ng4+, Kg5
4. Qf5+, Nxf5
5. Rxf5+, Kg6
6. Re5+, Rc2 blocks the check.
7. Bxc2+, Qd3 blocks the check.
8. Bxd3+, Kf7
9. Re7+, Kg8
10. Nh6+, Kh8,
11. _____