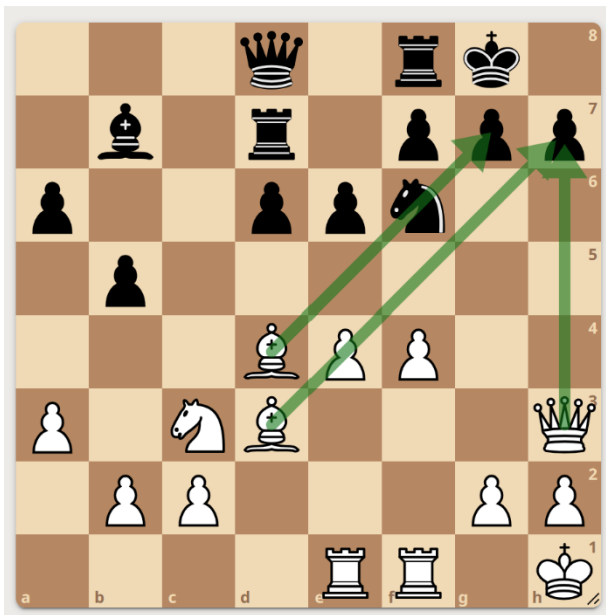


WEI YI

Born China 1999. Represents China. ELO 2754

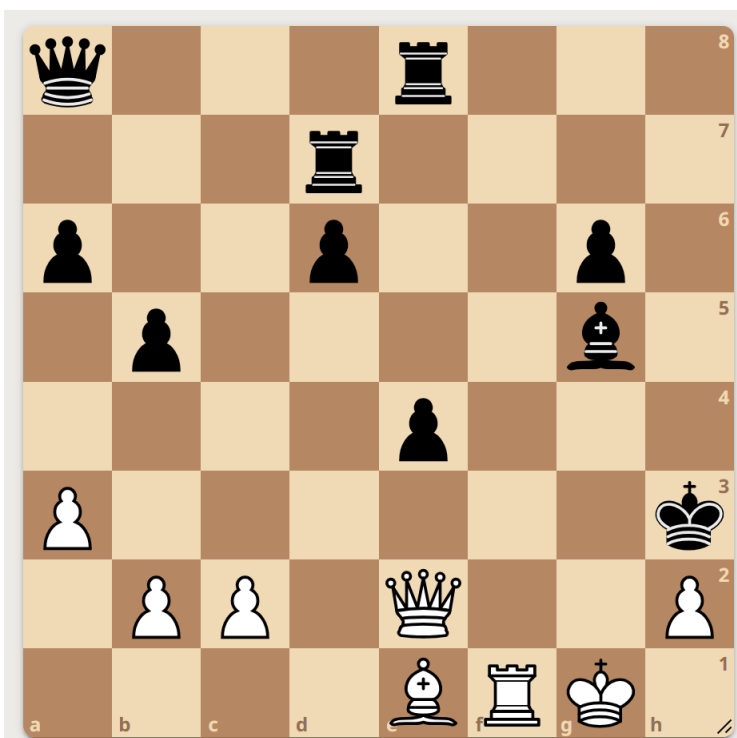
Rose into top level chess at age 15 by passing 2700 ELO. Qualified for the Candidates tournament by being runner up in the FIDE World Cup 2025. This is his first time in the Candidates tournament.

This is a game from 2015-v- Lazaro Bruzon Batista. Wei Yi was white and just 15 years old.



Notice the strong position of Wei Yi at this moment in the game. He has **double bishops** lining up pointing towards the kingside, with the Queen on the h file.

Also notice the central **connected rooks** that Wei Yi has.



In the actual game, the opponent resigned before the checkmate. But, if the game had played on, can you find the checkmate in one move for white?

Answer _____

Your name
