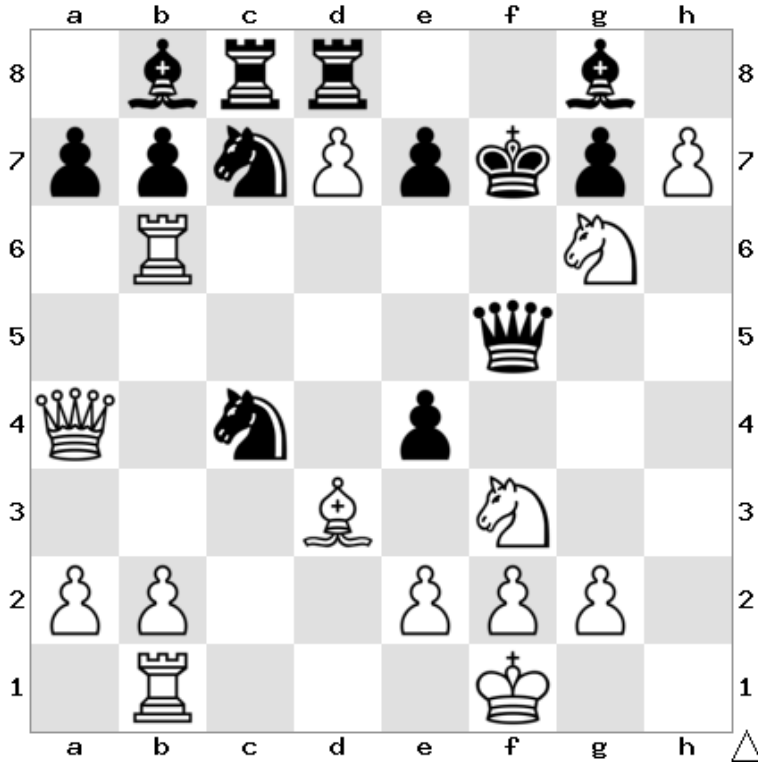


CHESSMATES CHESS CLUB

HHJS SUMMER 2020 PUZZLE CHALLENGE

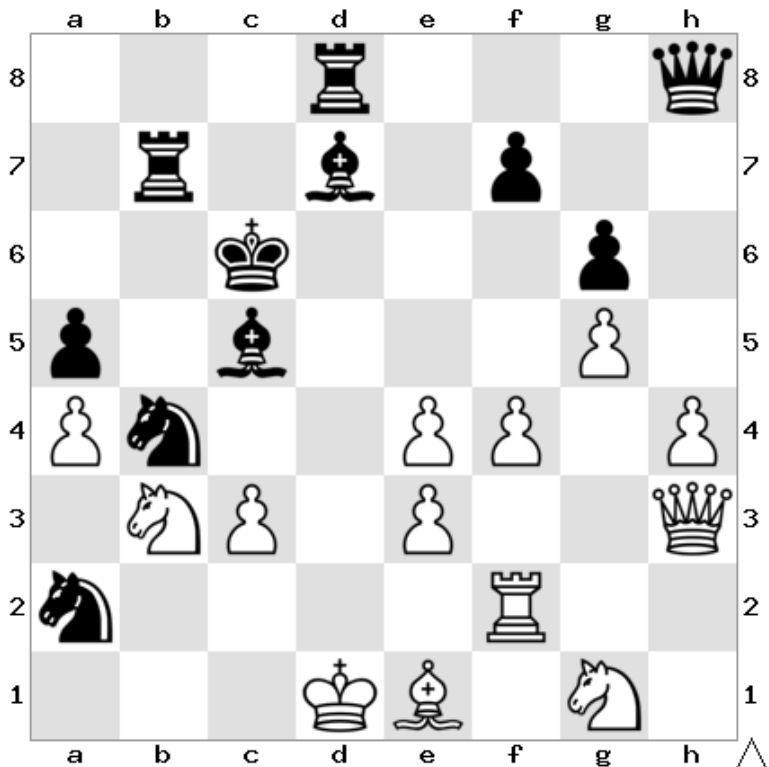
A collection of CHECKMATE IN ONE MOVE puzzles, designed by our own club children. How many can you solve?

1. Puzzle created by James in Year 3. It is White to move and checkmate in one move.



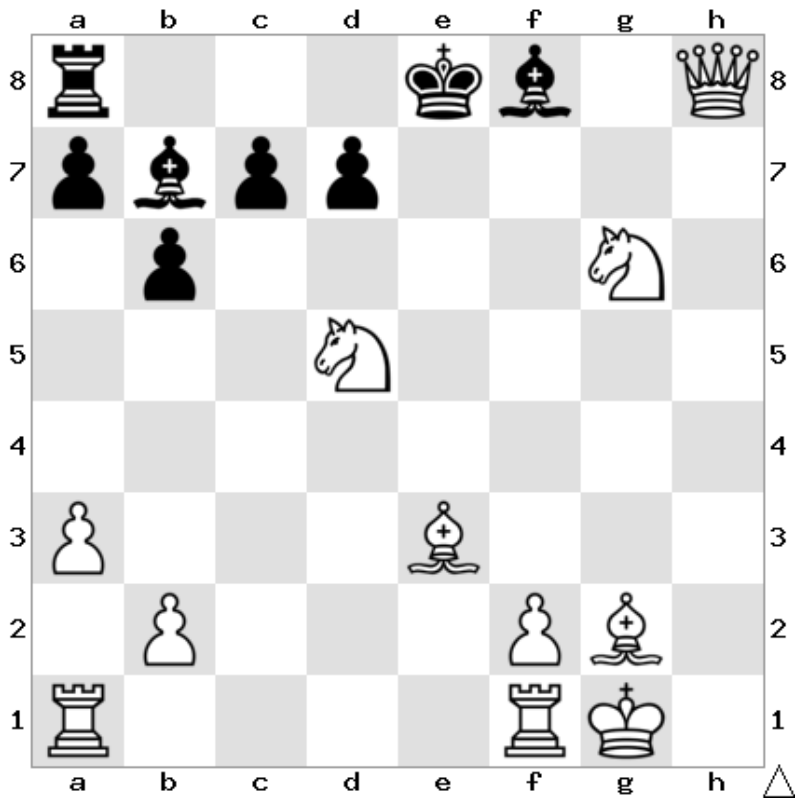
Answer

2. Puzzle created by Pulman in Year 6. It is Black to move and checkmate in one move.



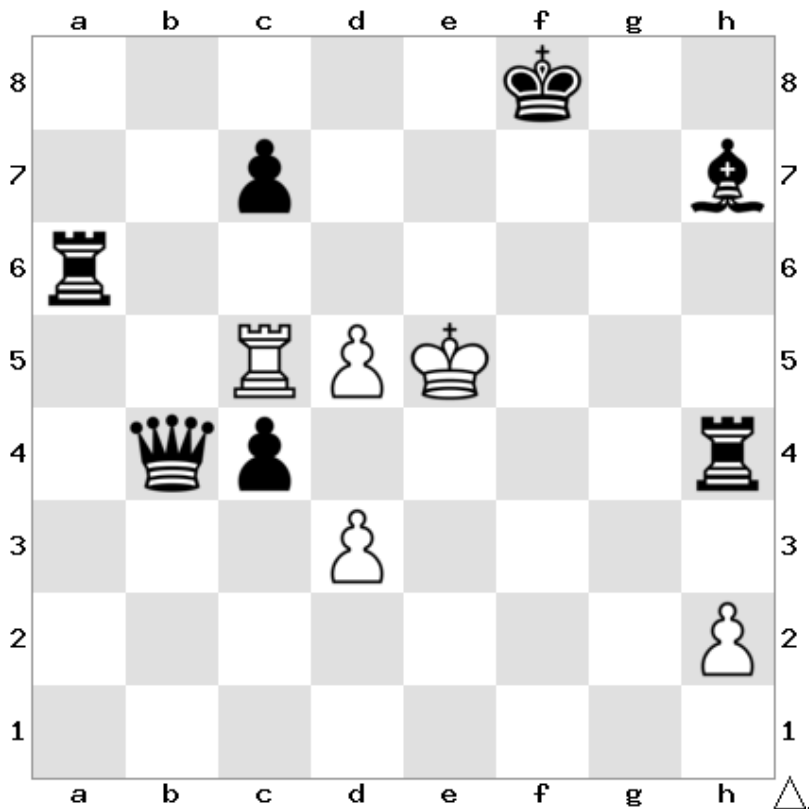
Answer

3. Puzzle created by Isabella in Year 3. It is White to move and checkmate in one move.



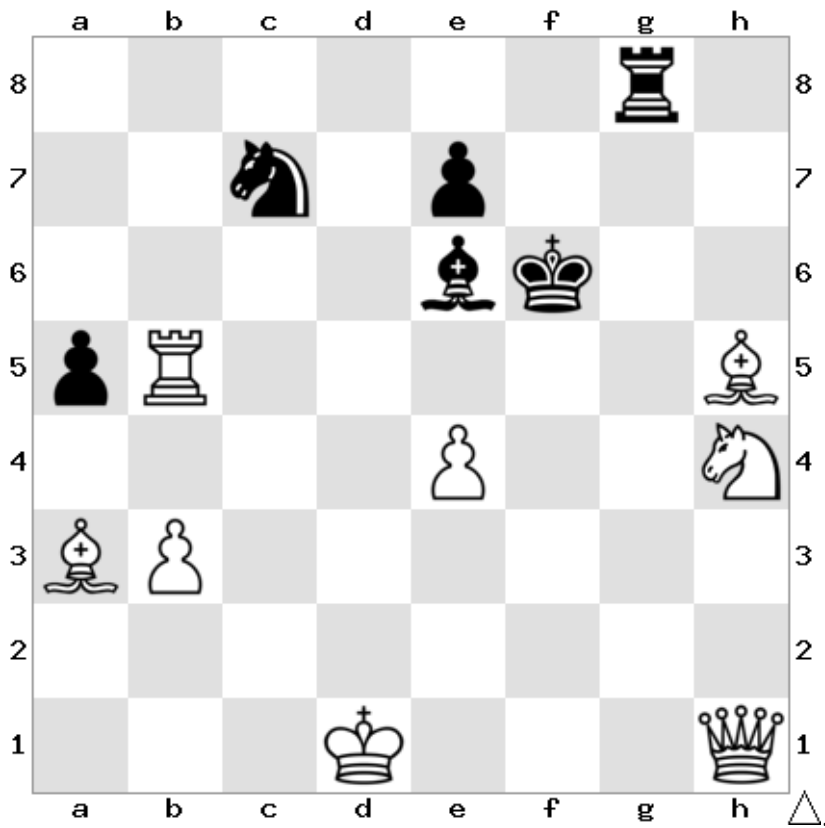
Answer

4. Puzzle created by Jack in Year 3. It is Black to move and checkmate in one move.



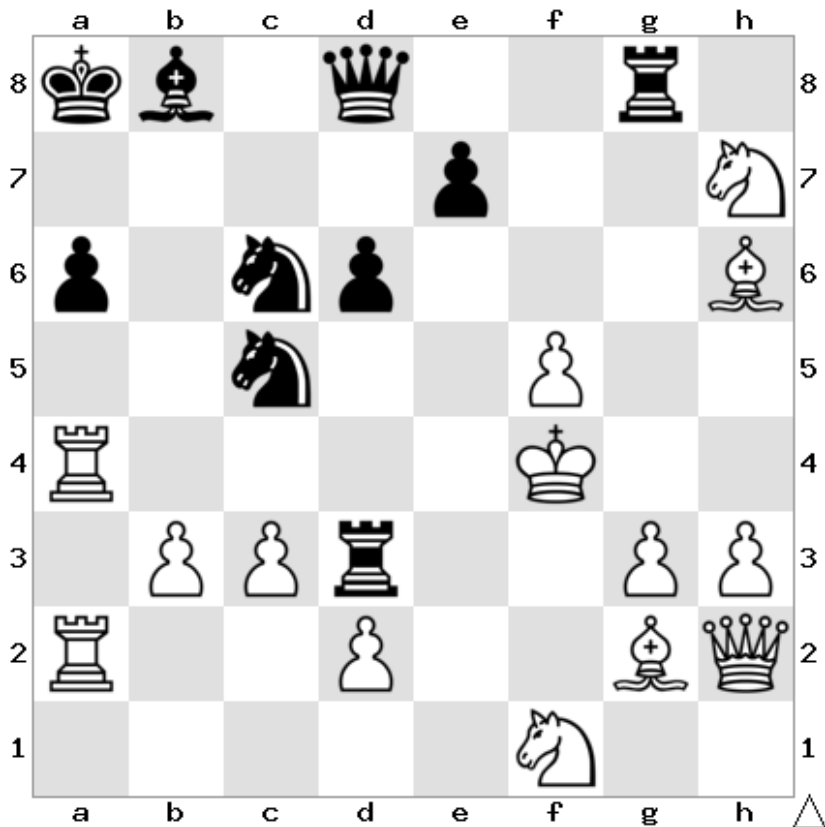
Answer

5. Puzzle created by Eleanor in Year 3. It is White to move and checkmate in one move.



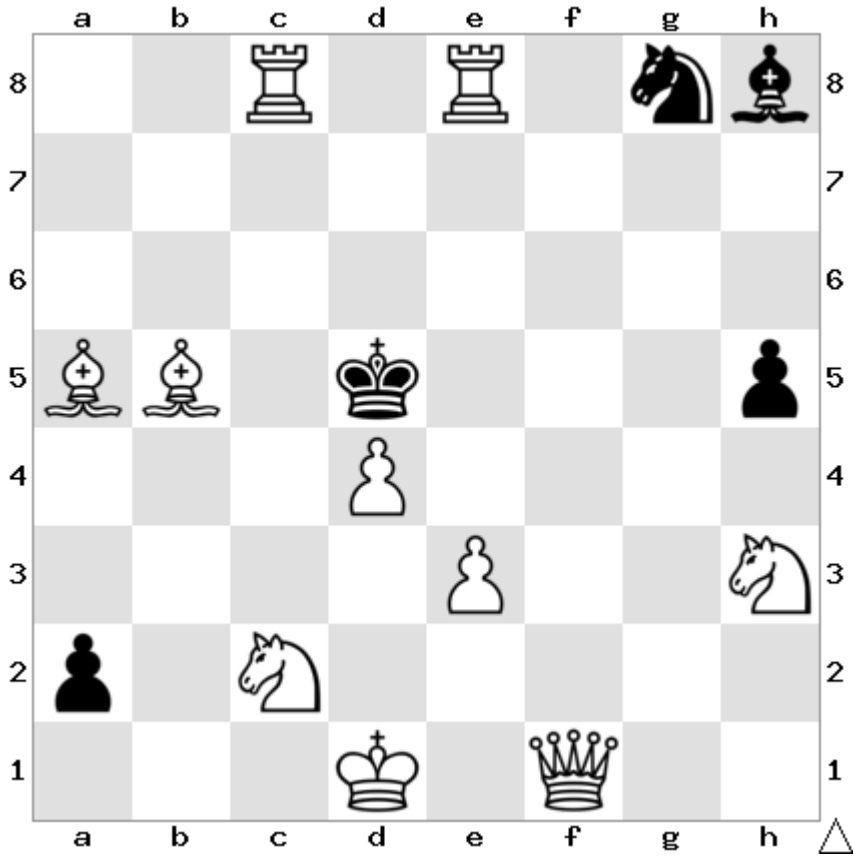
Answer

6. Puzzle created by Barnaby in Year 4. It is Black to move and checkmate in one move.



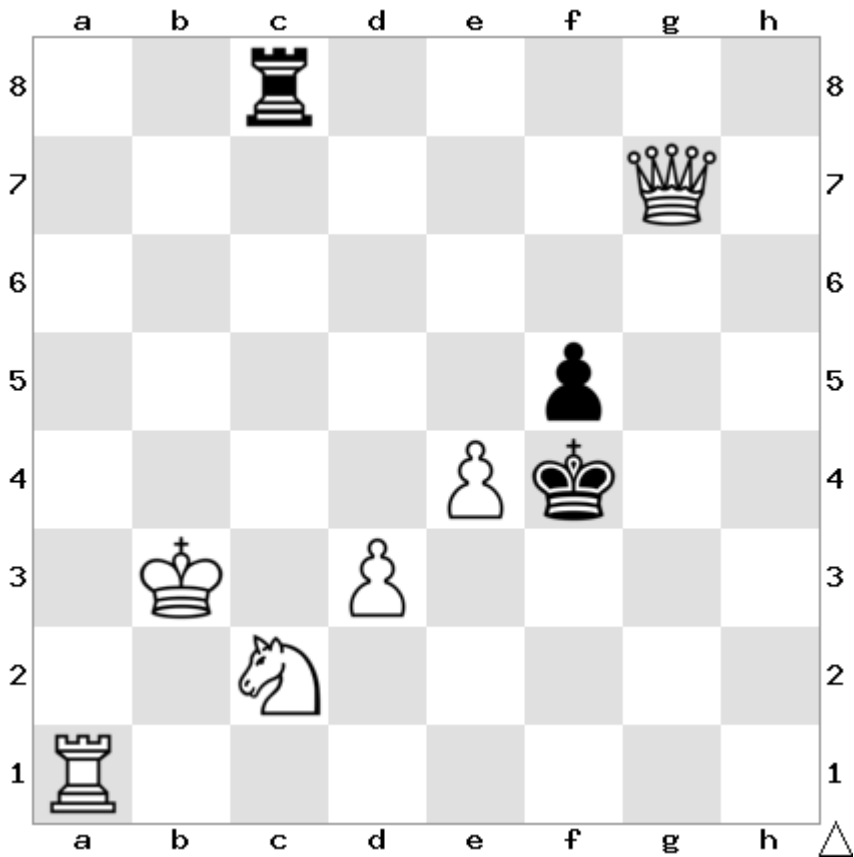
Answer

7. Puzzle created by Emma in Year 5. It is White to move and checkmate in one move.



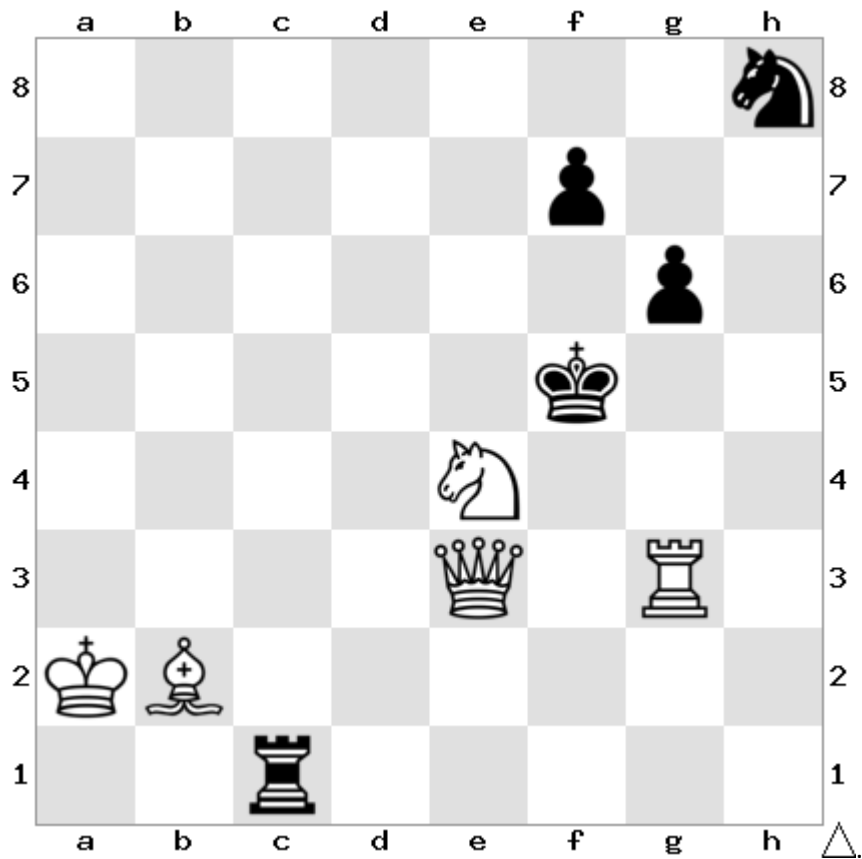
Answer

8. Puzzle created by Conor in Year 5. It is White to move and checkmate in one move.



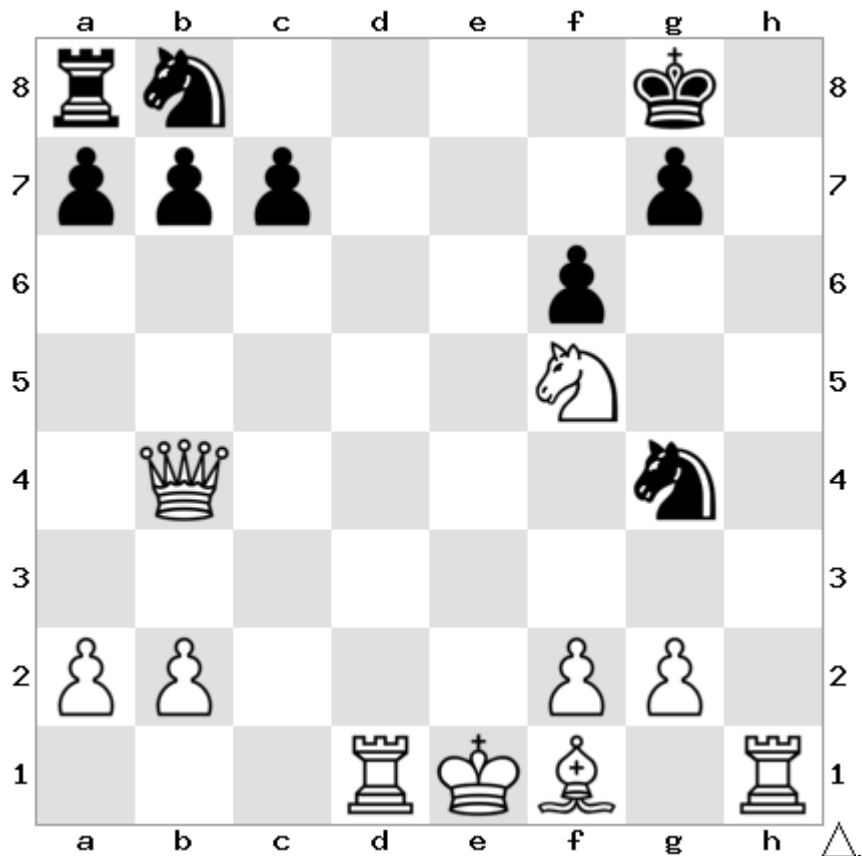
Answer

9. Puzzle created by Naji in Year 5. It is White to move and checkmate in one move.



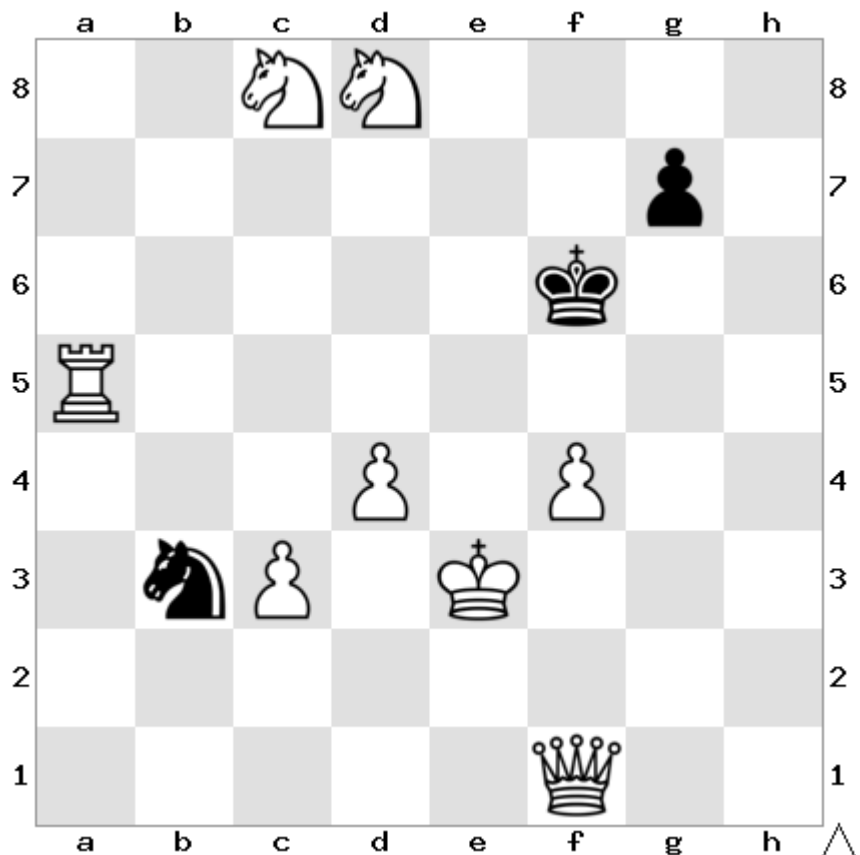
Answer

10. Puzzle created by Harry in Year 3. It is White to move and checkmate in one move.



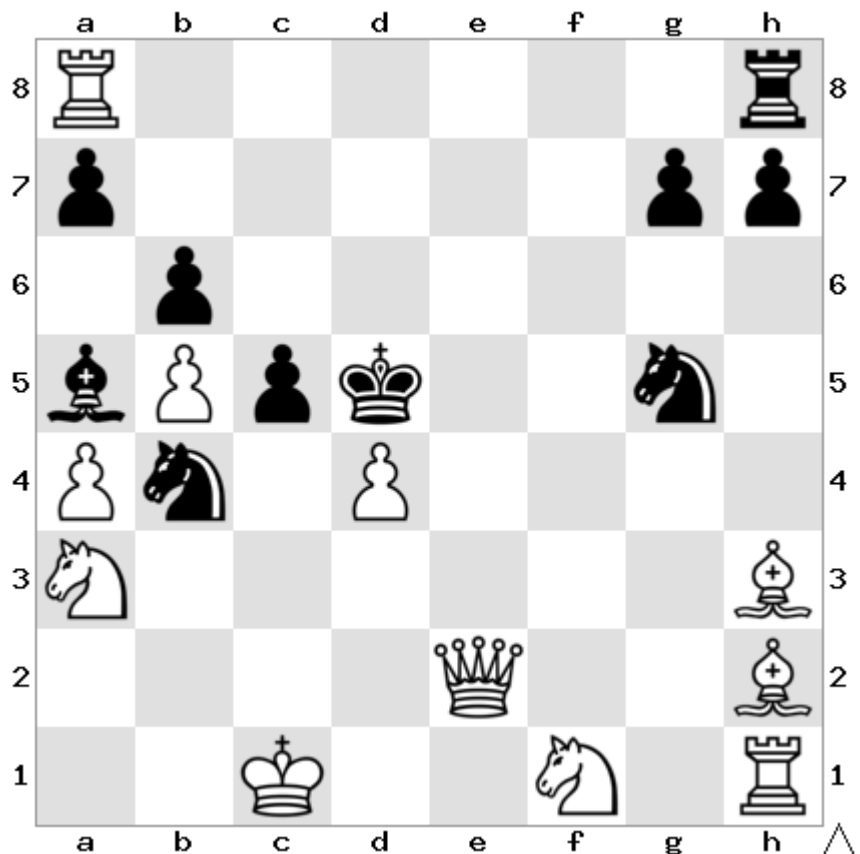
Answer

11. Puzzle created by Lysander in Year 4. It is White to move and checkmate in one move.



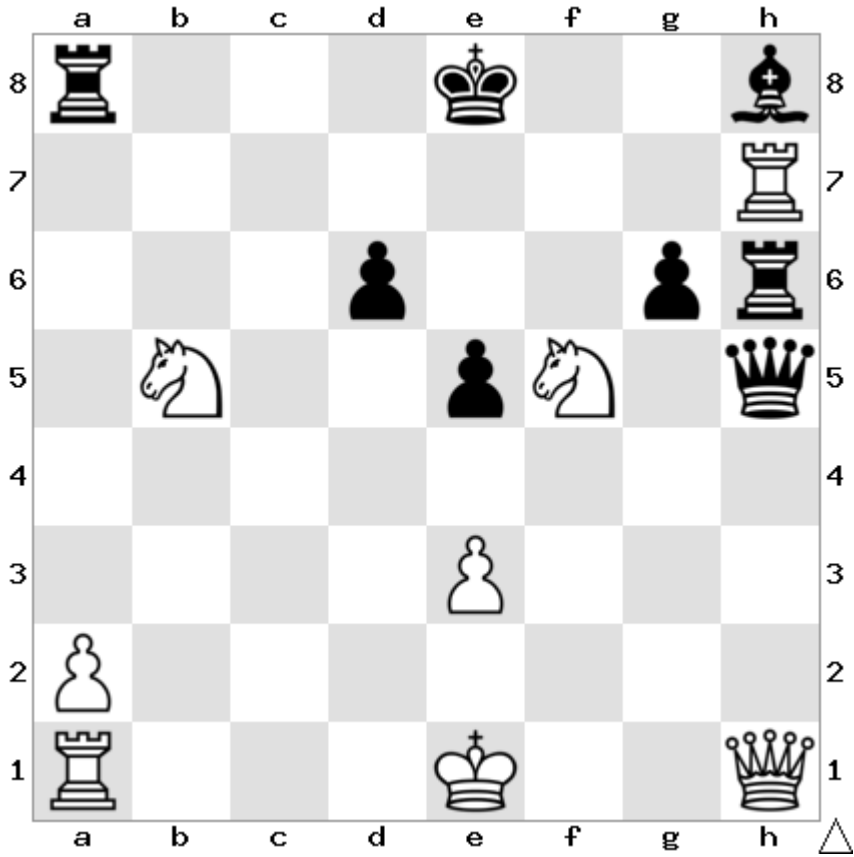
Answer

12. Puzzle created by Raffy in Year 5. It is White to move and checkmate in one move.



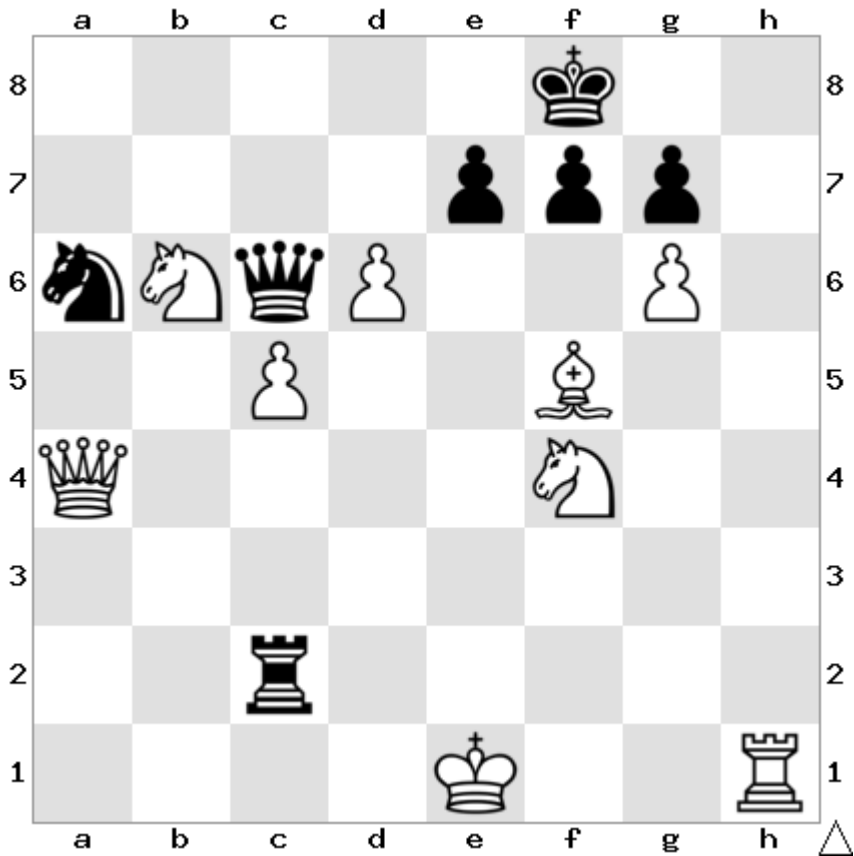
Answer

13. Puzzle created by Keira in Year 4. It is White to move and checkmate in one move.



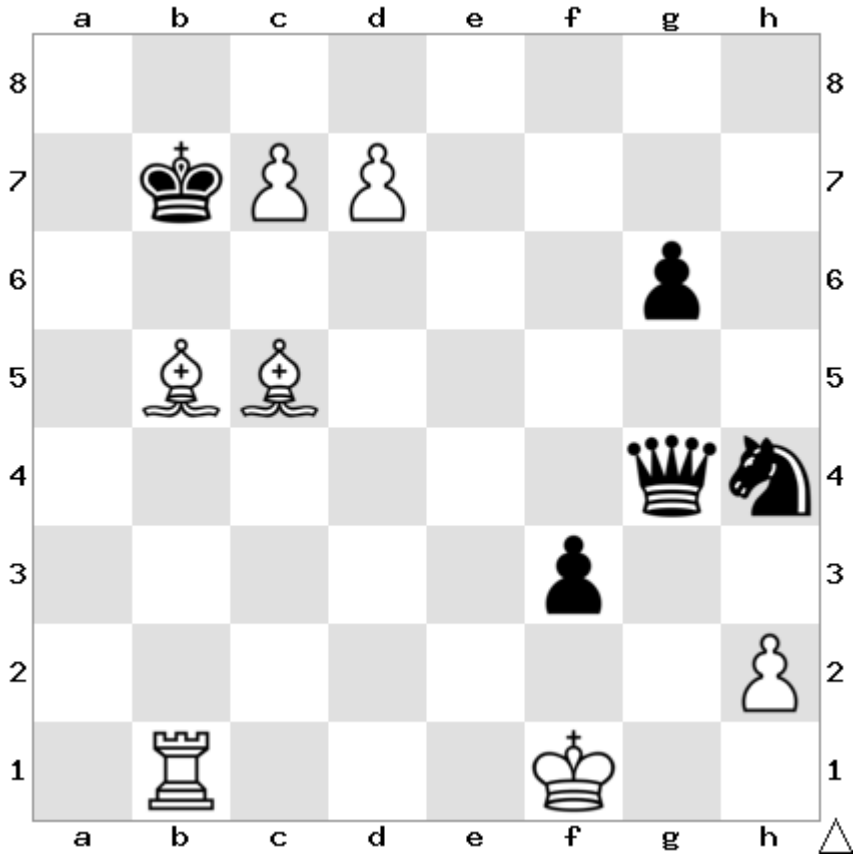
Answer

14. Puzzle created by Jonah in Year 4. It is White to move and checkmate in one move.



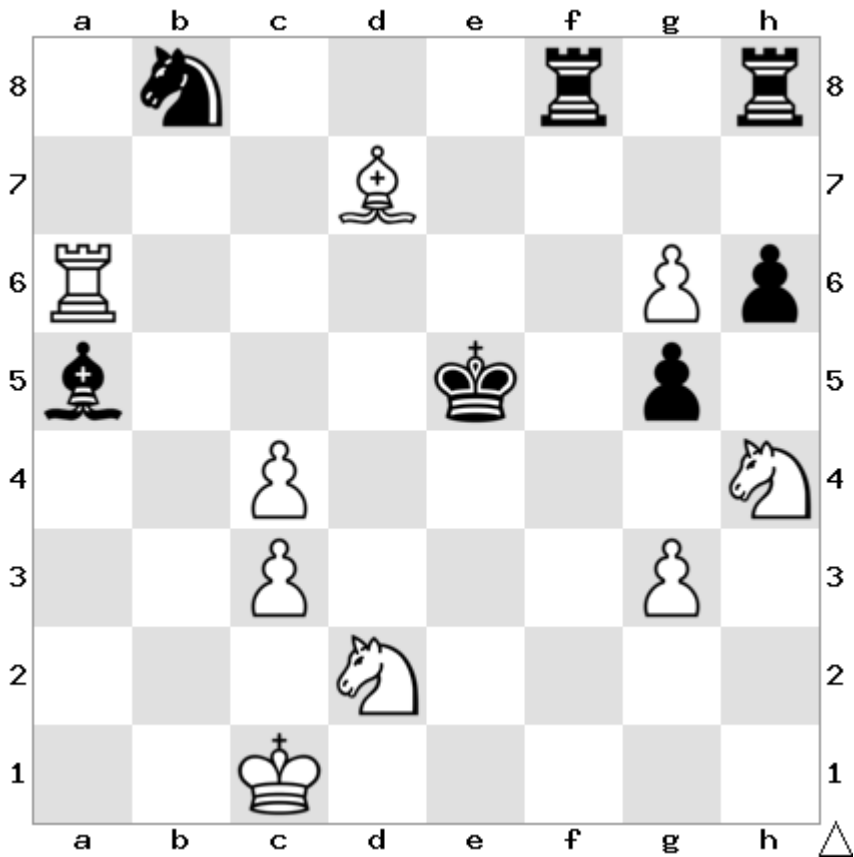
Answer

15. Puzzle created by Joey in Year 3. It is White to move and checkmate in one move.



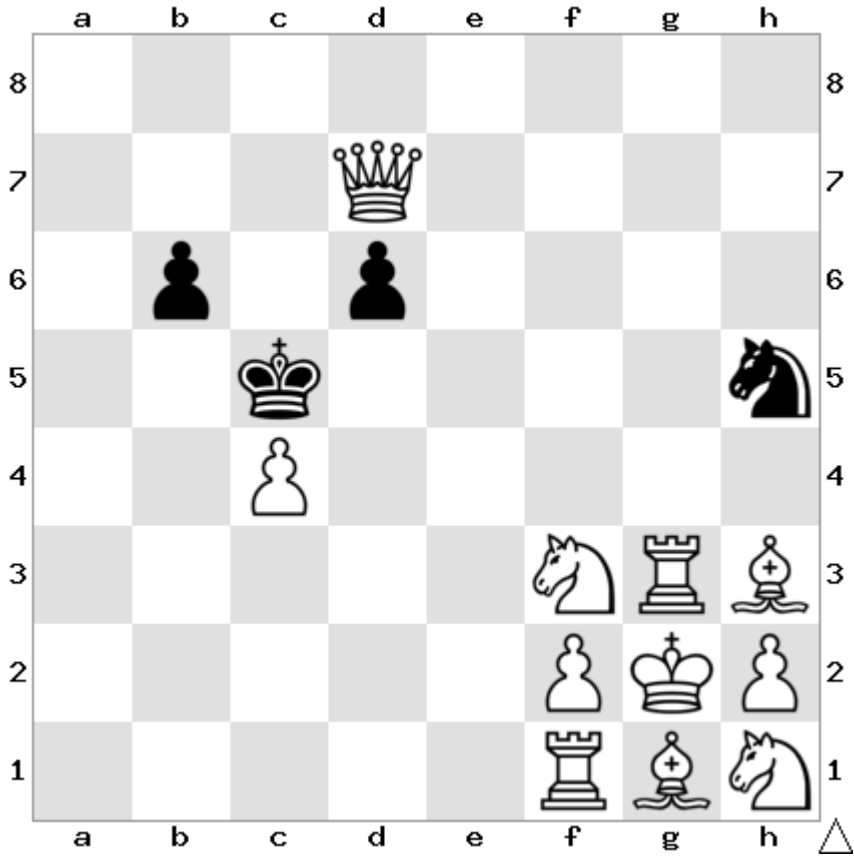
Answer

16. Puzzle created by Matthew in Year 6. It is White to move and checkmate in one move.



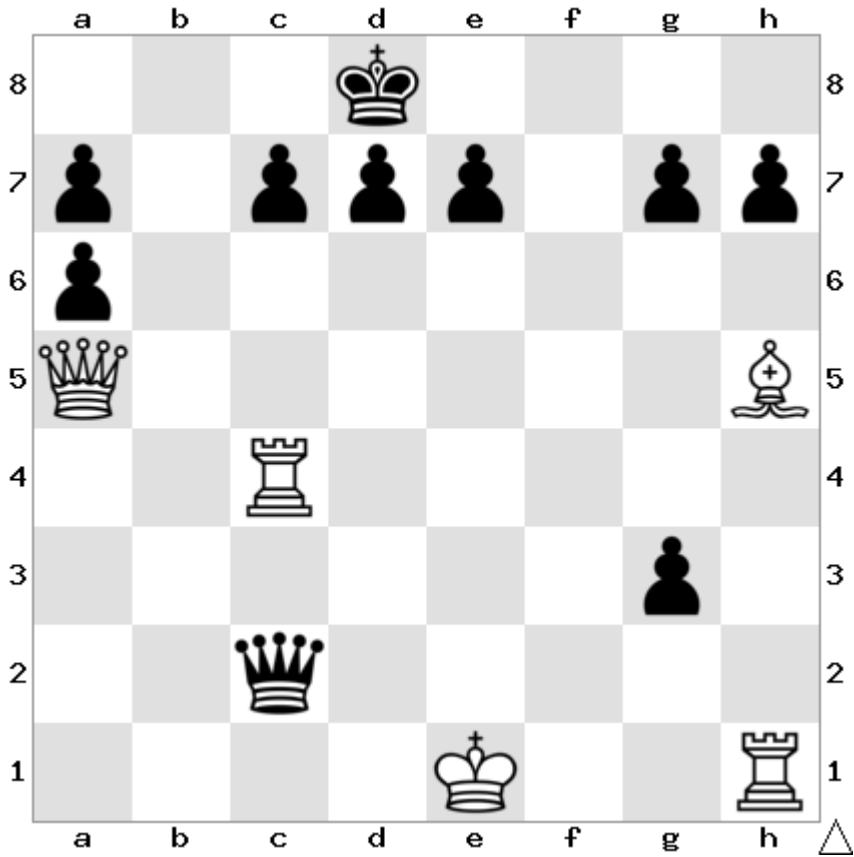
Answer

17. Puzzle created by Iris in Year 3. It is Black to move and checkmate in one move.



Answer

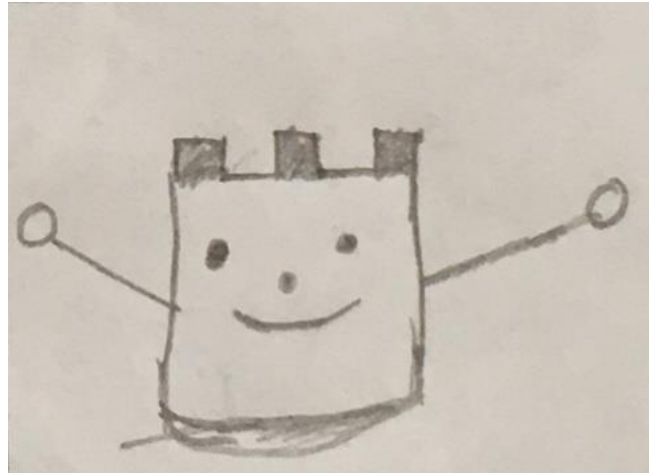
18. Puzzle created by Thomas in Year 4. It is White to move and checkmate in one move.



Answer

Answers Page.

1. h8=N++
2. Bg4++ (Black)
3. Qxf8++
4. Qe1++ (Black)
5. Bb2++
6. d5++ (Black) (Note e5+ is not mate as there's an en passant possible).
7. Rcd8++
8. Rf1++
9. Nd6++
10. Bc4++
11. Qa6++
12. Qe5++
13. Qxa8++
14. Rh8++
15. c8=Q++
16. Re6++
17. Nf4++ (Black)
18. Qxc7++



Thank you to Harry, Jack and Jonah for the cartoon artwork

